

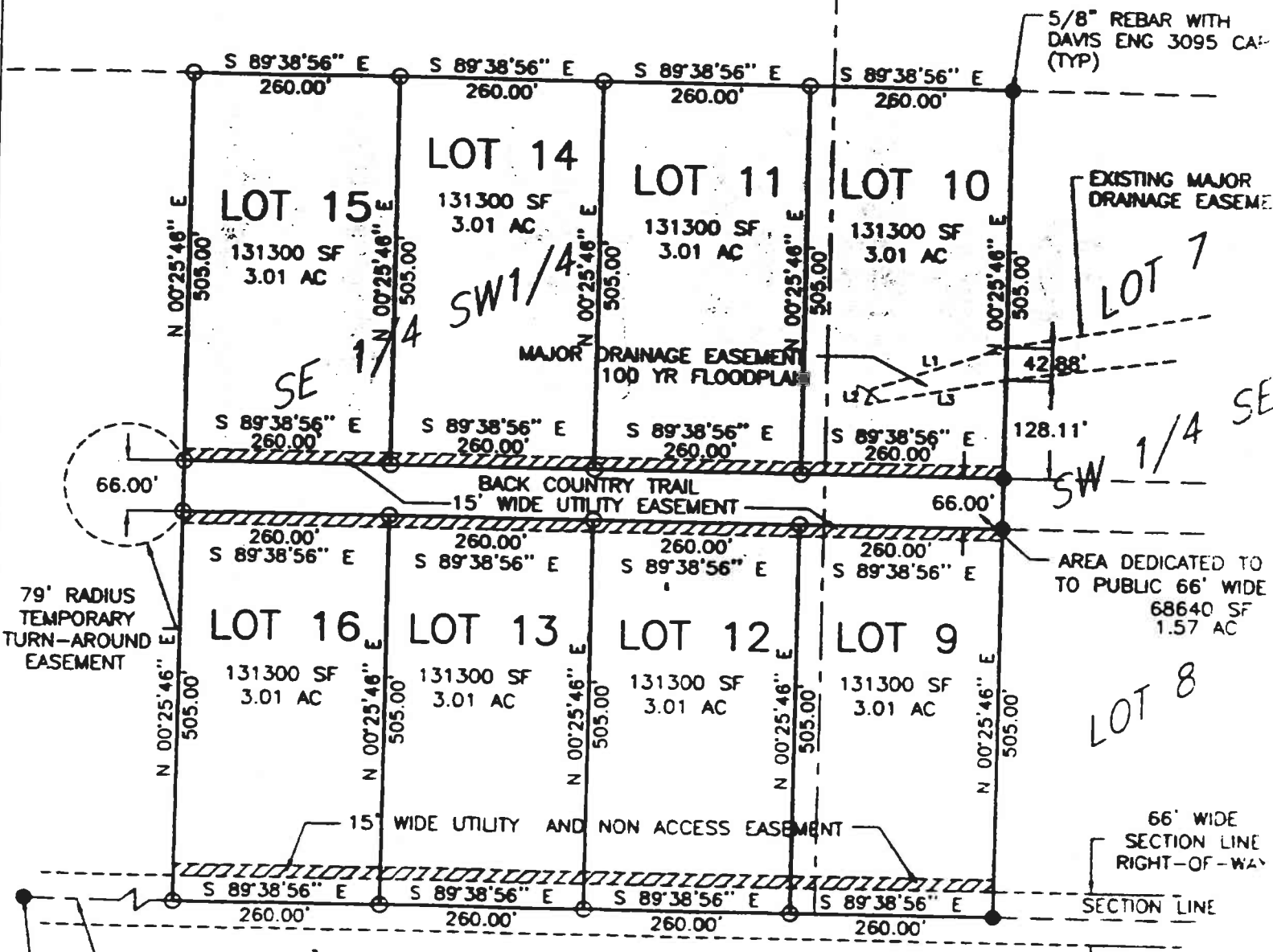
SECTION 29, T1N, R9E, BHM PENNINGTON COUNTY, SC

NE 1/4 SW 1/4

NW 1/4 SE 1/4

1/16 LINE

1/4 LINE



MAJOR DRAINAGE EASEMENT BEARING TABLE

NUMBER	DIRECTION	DISTANCE
L1	S 71°20'00" W	180.00
L2	S 20°52'00" W	21.00
L3	N 79°03'32" E	181.00

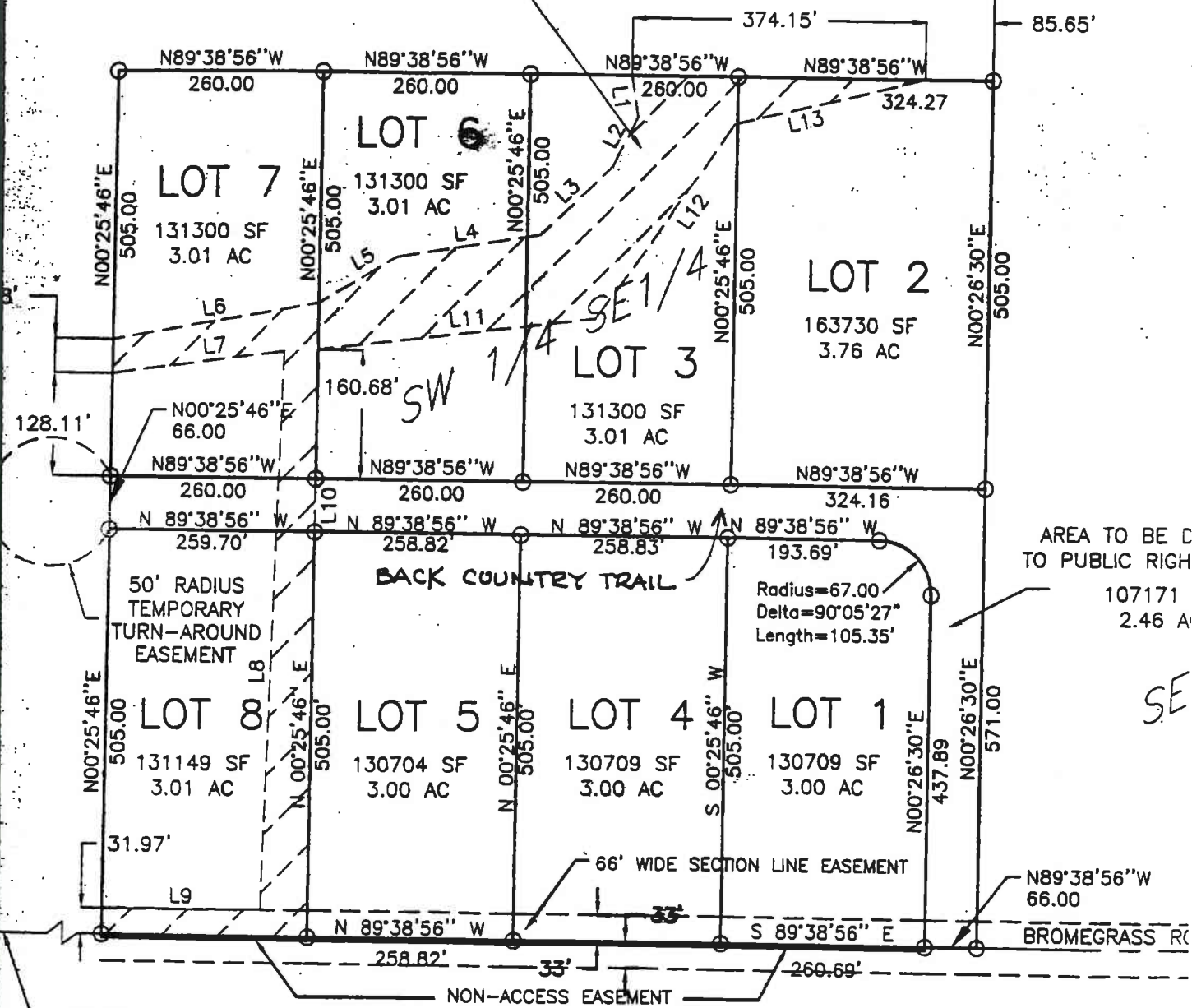
1/16 LINE

NW 1/4

1/16 LINE

NE 1/4

FEMA FLOODPLAIN AND MAJOR DRAINAGE EASEMENT SEE EASEMENT BEARING TABLE



AREA TO BE C TO PUBLIC RIGH

107171
2.46 A

SE

MAJOR DRAINAGE EASEMENT BEARING TABLE

NUMBER	DIRECTION	DISTANCE
L1	N09°28'12"W	51.38
L2	N25°41'42"E	67.95
L3	N45°47'51"E	123.28
L4	N80°58'34"E	180.17
L5	N59°43'42"E	114.97
L6	N79°59'11"E	264.38
L7	N82°22'22"E	218.63
L8	N01°50'33"E	696.51
L9	EAST	199.30
L10	N00°25'46"E	66.00

FLOODPLAIN NOTES:

FEMA FLOODPLAIN DETERMINED USING FEMA FIRM MAP PANEL 793 OF 2025 USING ELEVATION 3172.00 AS THE FLOOD ELEVATION LINE. BENCHMARK USED WAS FEMA RM9 WITH AN ELEVATION OF 2983.74 AS SHOWN ON FEMA FLOODWAY MAP PANEL 789 OF 2025.

ROUND BRASS CAP